

updated Monday afternoon
7/29/24

Swawilla Fire

Here's what you need to know.

Evacuation levels



Level 1 - Danger is nearby, prepare by staying informed, have a plan on where to go and how to get there, begin moving people with disabilities and any livestock



Level 2 - High danger in your area, follow your evacuation plan, relocate people and animals to safety



Level 3 - Danger is expected, leave now, stay at your own risk; if fire reaches you do NOT leave so that roads are clear for EMS

Updates:

- Be careful of fire traffic and give them right-of-way.
- For your safety, stay on paved surfaces.
- There is a checkpoint at Hwy 21 and Manilla Creek because Keller is still at Evacuation Level 3.
- Peter Dan to Manilla Creek is now open to local resident traffic only.
- Manilla Creek to Keller Ferry on Hwy. 21 is going to Level 2.
- Keller Ferry is only available to residents leaving and emergency response vehicles.
- 211 is always ready to assist you in finding the help you need. A free confidential community service and your one-stop connection to the local services you need, from utility assistance, food, housing, health, child care, after school programs, elder care, crisis intervention and much more. <https://wa211.org/about-2-1-1/>

SHELTER INFO

REPUBLIC

Ferry County Fairgrounds (pet friendly and room for livestock, feed is available)

12 Fairgrounds Rd., Republic, WA 99166

NESPELEM


Nespelem Rodeo Grounds for livestock/large animals, no services, BYOFeed


Lower Columbia River Rd., Nespelem, WA 99155

GRAND COULEE

Rodeo Grounds (livestock/large animals, no services)

22152 Alcan Rd NE, Grand Coulee WA 99133

 = shelter for people

 = shelter for animals / livestock

Colville Tribes Emergency Operations Center hotlines answered 24 hours



509-634-7350

509-634-7359



EVACUATION MAP

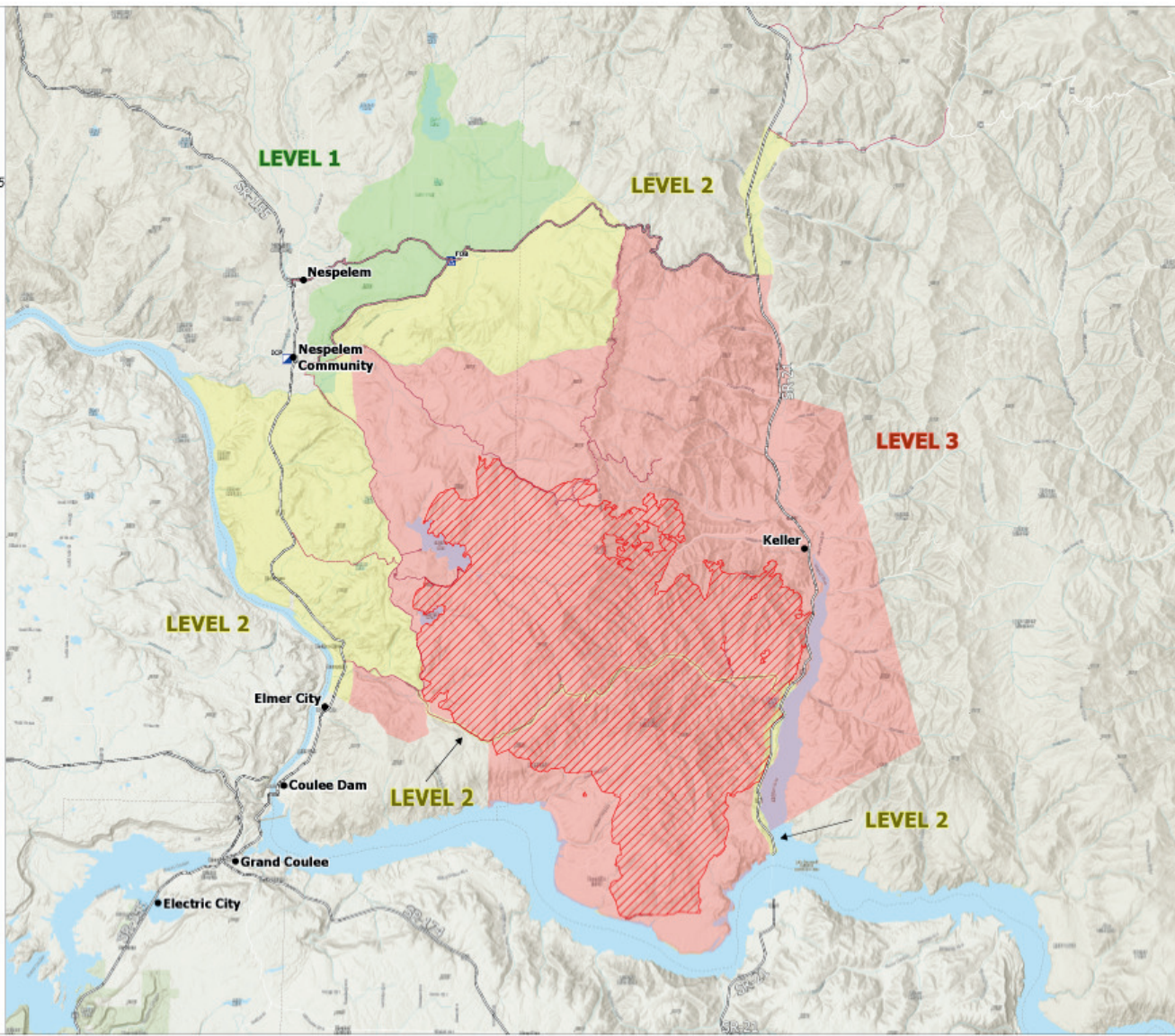
Swawilla I
WACO-240089
7/29/2024

47190 acres at 7/28/2024 @ 2345

0 0.5 1 1.5 2 2.5 3
Miles

1:50,000 | NAD 83 Zone 10 | 7/28/2024 10:54
Aerial Photo (S) and GPS
North American 1983 Datum - Lat/Long Grid

- LEVEL 1 (Ready)
- LEVEL 2 (Set)
- LEVEL 3 (Go)
- Incident Command Post
- Camp
- Wildfire Daily Fire Perimeter
- Light Duty Rds
- Secondary Highway



Fire fighters will be conducting controlled burn out operations in the Keller area. Call EOC with concerns.

There's a smoke advisory due to poor air quality. If you have respiratory issues, please call EOC about getting an air purifier.

**See something?
Say something.
Call 9-1-1.**

SUPPLEMENTAL DESCRIPTIONS FOR EVACUATION ZONES

Evacuation Order - Level 3 - GO

North along Manila Creek Road, from Highway 21 to approximately where Swawilla Basin Road intersects with Manila Creek Road/Peter Dan Road; Everything south of Cache Creek Road to the junction with State Highway 21 and south to the Columbia River; Everything west to Hells Canyon and then Northwest to just north of Elmer city at Hwy 155 then north of Hwy 155 to the junction with Joe Moses Road; Town of Keller, "the mouth" east of Hwy. 21 from Empire Creek Rd down to Lake Roosevelt.

Evacuation Order - Level 2 - SET

Residents of Peter Dan Road, McGinnis Lake, Reynolds Resort, Belvedere, Seaton's Grove and Elmer City; Everything from the junction of Joe Moses Road and Buffalo Lake Road to Cache Creek Road on the north and Keller Butte on the east. Hwy 21 north of Cache Creek.

Peter Dan to Manilla Creek is now open to local resident traffic only. Manilla Creek to Keller Ferry on Hwy. 21 is now Level 2. There is a checkpoint at Hwy 21 and Manilla Creek because Keller is still at Evacuation Level 3.

Evacuation Order - Level 1 - READY

Level 1 evacuation is the town of Nespelem and north of Cache Creek Rd to Owhi Lake and Colville Agency.



More info - CCT EOC (509) 634-7350